



Dedicate our efforts and the means at our disposal to improving that which can be made better.

Innovate to provide advanced solutions to a constantly changing market.

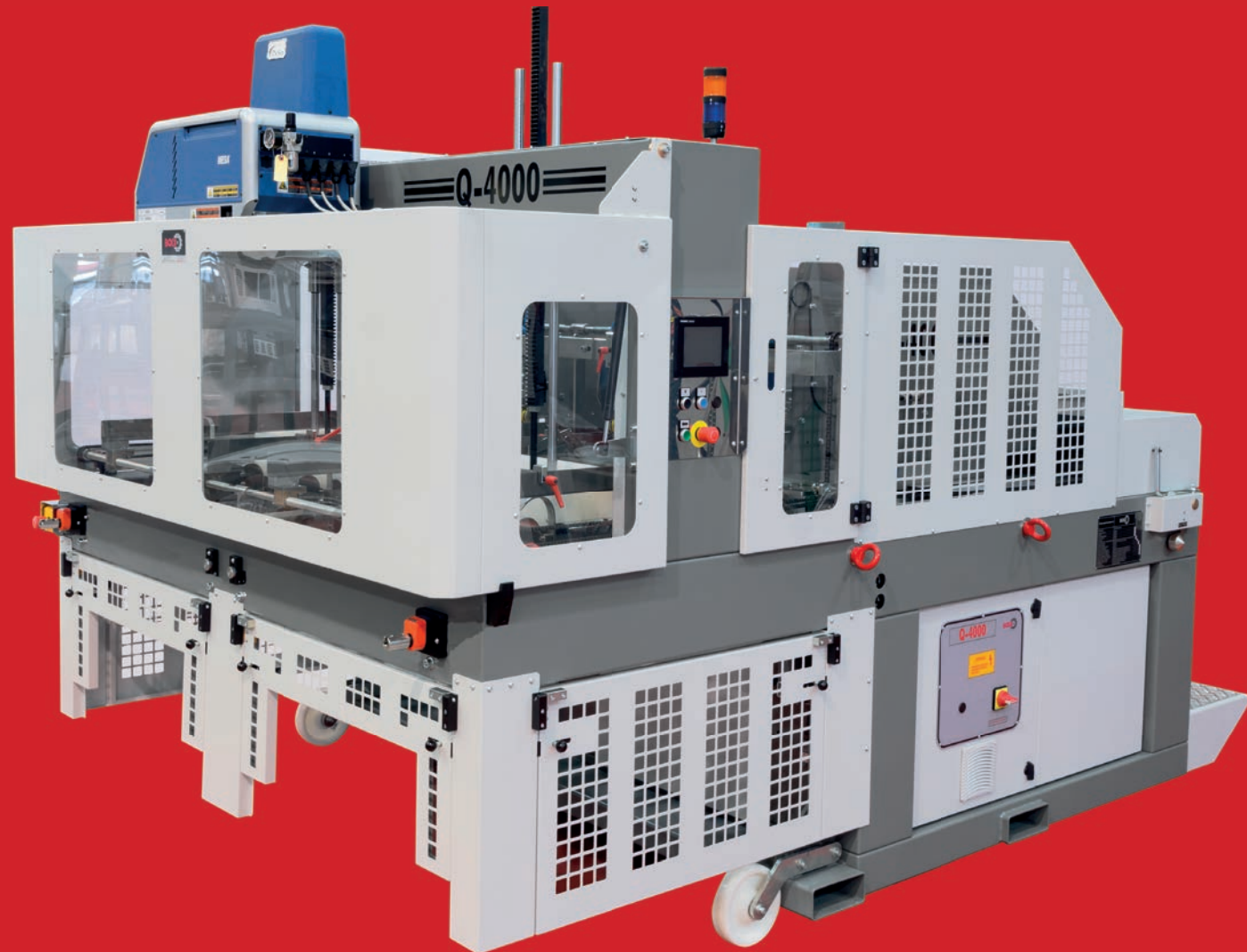
Commitment to achieve and surpass your expectations.



- Customers in more than 80 countries**
- More than 8,000 Machines sold.**
- Technical service and maintenance.**
- Fast supply of spare parts.**
- 45 years designing and manufacturing machines.**

Your Box Forming Partner

DOUBLE HEAD TRAY FORMING MACHINE



BOIX MAQUINARIA Pol. Ind. La Granadina C/Dinamarca s/n (Fase 1) Nave, Puerta 11 03349 San Isidro (Alicante) España. Tel: (+34) 96 60 60 100 sales@boix.es	BOIX EUROPE B.V. Louberweg 6 6961 EK Eerbeek The Netherlands. Tel: (+31) 313 670 460 sales@boixeurope.com	MAQUINARIA BOIX MÉXICO SA. de CV. Av. Oleoducto N° 201 Nave L, Col. Cd. Industrial 37490 - León, Gto. México. Tel: (+52) (477) 170 0000 ventas@boix.mx	BOIX CHILE SA. El Roble 375, Bodega J Loteo Ind. Valle Grande Lampa, Santiago de Chile. Tel: +56 (2) 2361 2600 ventas@boix.cl	BOIX MACHINERY USA L.L.C. 15024 Farm to Market Road 529 Houston 77095 (Texas) USA Tel: (+1) 713 491 2820 sales@boix.us	BOIX ASIA Equipment Co., Ltd. Building 4 No.1288 Kanghe Road, Xiuzhou District, Jiaxing City, Zhejiang Province (China) Tel: (+86) 512 6983 3800 sales@boixasia.com
---	---	--	--	---	---

Q-4000

Designed for high output for C-1 base and lids

Sprzedaż i serwis techniczny:
BOSKY
ul. ks. P. Ściegiennego 262 Y
25-116 Kielce, Poland
info@bosky.pl
+ 48 41 334 04 44



www.boix.com

The Illustrations, descriptions and technical specifications that appear in this document, and that refer to the model, equipment, kits, technical characteristics, accessories, ranges and possibilities of configuration of the machine, are those existing and in force at the moment of its printing (march 2019). As such the machine or its components may have undergone subsequent modifications or may not be available. Therefore Boix recommends that you confirm with our sales staff when requesting your machine quote, that the images and technical characteristics shown are still in force at such time. © Boix Machinery. Reproduction is permitted only in a summary or partial form of this catalog with written authorization.



ALL ABOUT THE Q-4000

TECHNICAL SPECIFICATIONS

OPERATION	Mechanical, Electrical and Pneumatical
GLUE SYSTEM	Hot Melt, Glue Injection with automatic glue feeder
BOX DESIGN	C-1 or bottom and lid boxes
PRODUCTION	From 500 up to 2000 trays/hour (Per head)
TOTAL POWER	7,2 Kw (Optional compressor)
NET WEIGHT	2.050 Kg
ELECTRICAL SUPPLY	380/220 V (3F+N+PE) - 50/60 Hz
CHANGE OF SIZE	Manually by use of threaded roads and counters
CHANGE OF SIZE (IN TIME)	10 to 15 min. Aprox. (Per head)
CHANGE OF DESIGN (IN TIME)	N. A.
WORKING AIR PRESSURE	7 BAR (7 kg/cm2)
AIR CONSUMPTION	160 litres/minute (forming 4000 tph) + automatic glue feeder
MACHINE FRAME	4mm Steel plate
MACHINE DIMENSIONS	L:3385 mm.; A:2300 mm.; H:2680 mm. / 133.26 x 90.55 x 105.51 in.

MAIN FEATURES

- **DOUBLE HEAD MACHINE, FOR GLUEING AND FORMING C-1 BOXES.**
- **POSSIBILITY TO FORM CONICAL BOXES.**
- **LOADING FROM REAR**
 - Horizontal blank hopper.
 - The blanks are pulled down by suction cups with vacuum generated by Ventury valve.
 - Automatic blowing function for easy release and cleaning the suction cups.
- **PROGRAMMING THROUGH simple and user friendly TOUCH SCREEN.**
- **AUTOMATIC GLUE FEEDER INCLUDED.**
- **OTHER FEATURES:**
 - Glue tank with weekly programmer.
 - Check-control and maintenance alarms via the programmer.
 - Automatic central oil pump to enable machine maintenance.

DETAILS



Designed for high production

Two head mechanical machine with one motor.

6 production speeds controlled by one speed variator.

Possibility to set each head to form different boxes, for example a base on one side and a lid on the other.

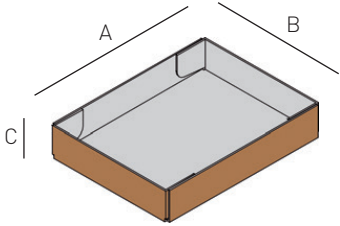
System can be adapted to work in line, machine will produce boxes on demand, controlling each side separately.

Automatic glue feeder included to increase glue tank autonomy and reduce maintenance.



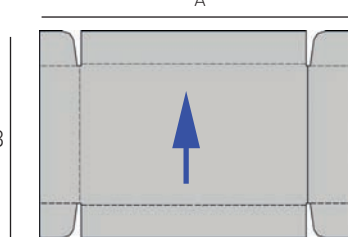
Effectiveness: "Success in achieving a given goal". With a Boix machine effectiveness is not an option, it is assured.

Box example



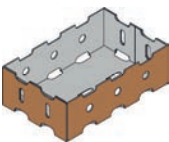
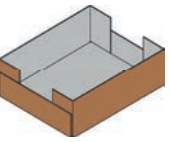
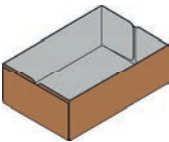
Box	A	B	C ⁽¹⁾
MAX.	600	600	235 mm. 23.62 23.62 9.25 in.
MIN.	300	250	80 mm. 11.81 9.84 3.14 in

Blank example

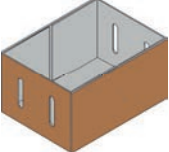
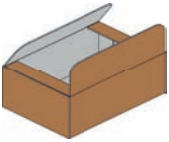
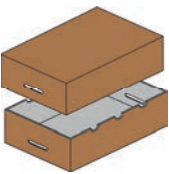


Blank	A	B
MAX.	950	940 mm. 37.40 37.00 in

C-1



Box Bottom and Cover



DESCRIPTION

DIMENSIONS, TYPES OF TRAYS AND OPTIONS

⁽¹⁾ Height and base dimensions will depend on the blank dimension.